



Pearmtree Hill Solar Farm

Environmental Statement

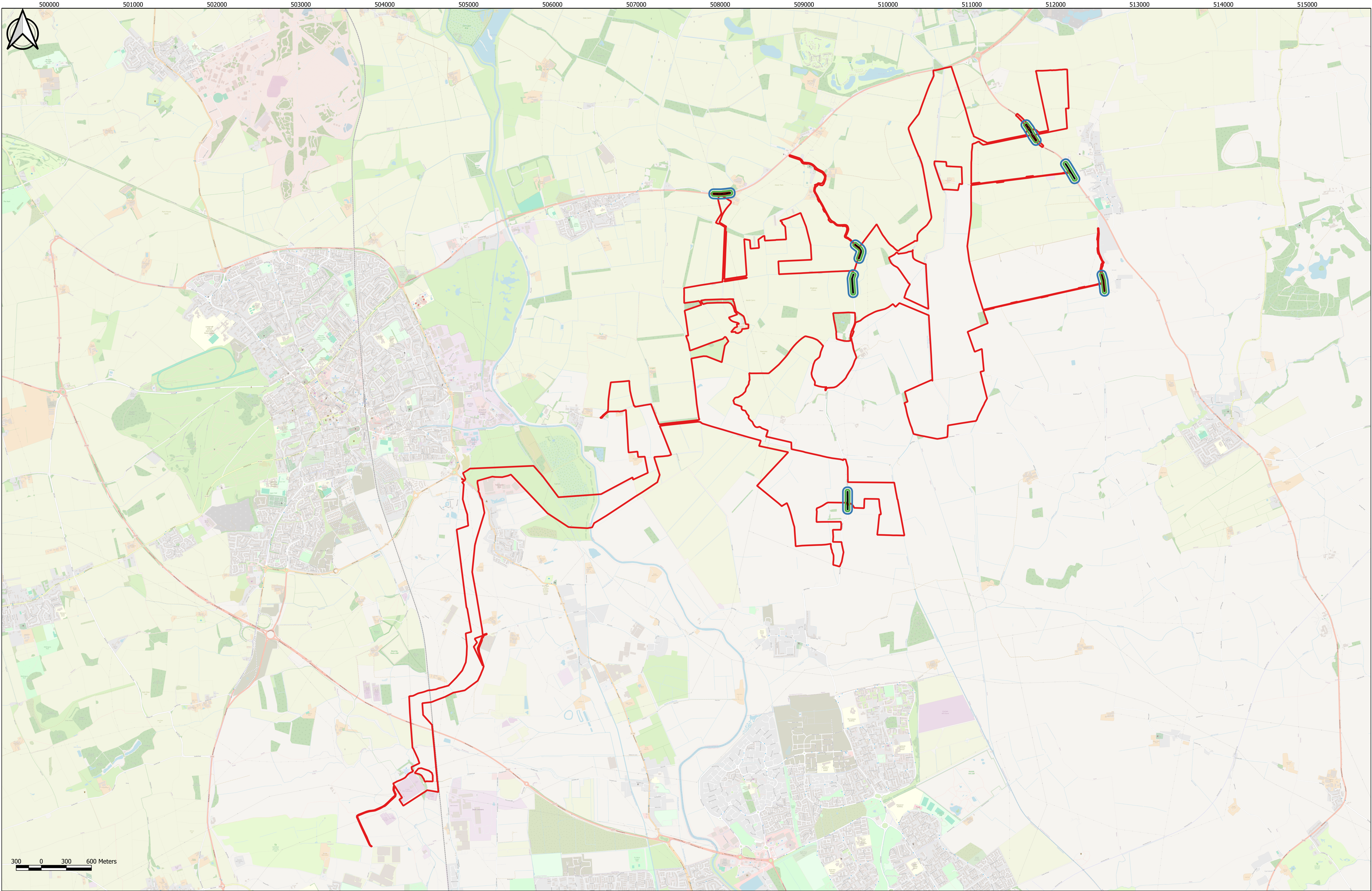
Volume 3

Figure 6.2: Trackout Activities Study Areas

Revision 2

Application Document Ref: EN010157/APP/6.3
September 2025

Planning Act 2008
Infrastructure Planning
(Applications: Prescribed Forms
and Procedure) Regulations 2009 –
Regulation 5(2)(a)



Key

- Order Limits
- Trackout
- 20m Study Area (For Trackout Activities)
- 50m Study Area (For Trackout Activities)

The Base mapping is based upon Ordnance Survey (OS) data. Reproduced by permission of Ordnance Survey on behalf of HMSO. © Crown copyright and database right 2024. All rights reserved. Ordnance Survey licence number 0100031673

Notes:

P02	27/08/2025	PC	SS	LY	SS
App	Date	By	Chkd	Appd	Authd

Client



Project Name
Peartree Hill Solar Farm

Designer

Drawing Title
Environmental Statement Volume 3, Figure 6.2: Trackout Activities Study Areas

SHEET 1 OF 1

Scale at A1
1:35000

Status
DCO Application

PINS Number
EN010157/APP/6.3

Coordinate System:
British National Grid

Rev

P02

RWE Renewables UK Limited

Windmill Hill Business Park,
Whitehill Way,
Swindon,
Wiltshire,
England,
SN5 6PB
www.rwe.com